

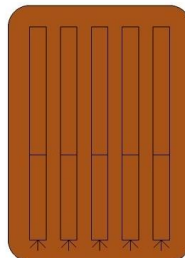
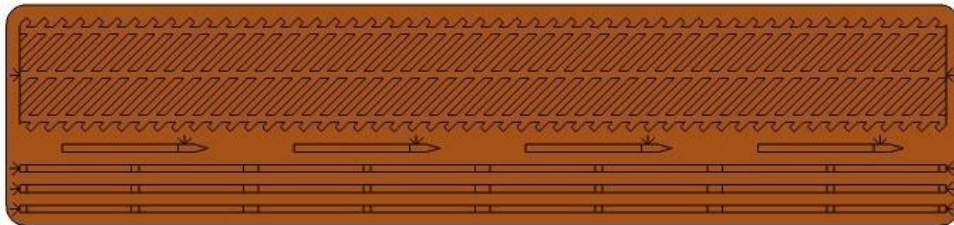
Design and production of fine quality laser cut models and components



Midland/LMS Diagonal Sawn Fencing

Instructions

Lay out the parts supplied to familiarise yourself with them.

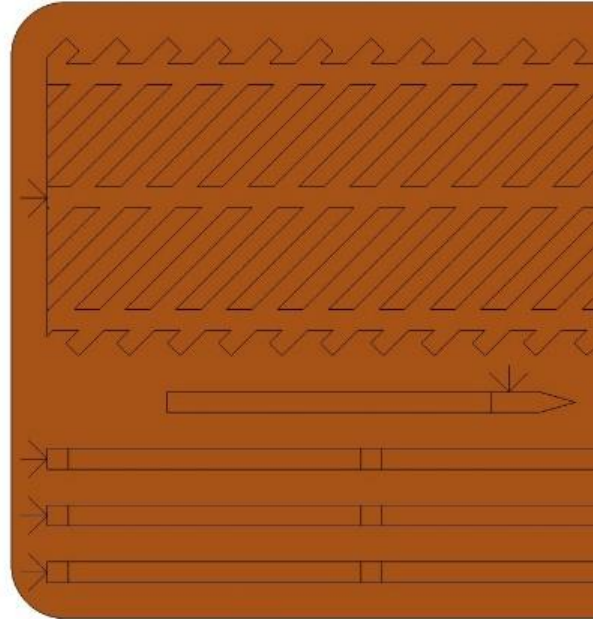


To assemble this kit you will require a good quality PVA adhesive and a craft knife or scalpel for cutting tabs on some parts. You may also find the aid of a pair of tweezers useful.

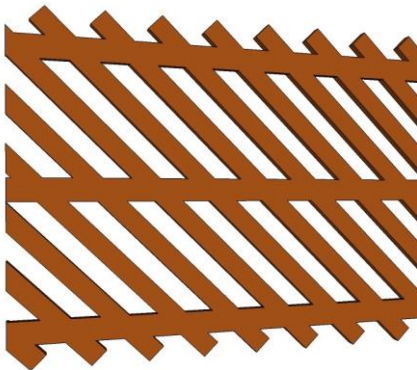
1

NOTE: Arrows mark release points of the parts

Slice through with a sharp blade for a clean release



2



Release the section with diagonal pales and lay flat with pales facing as shown opposite.

3

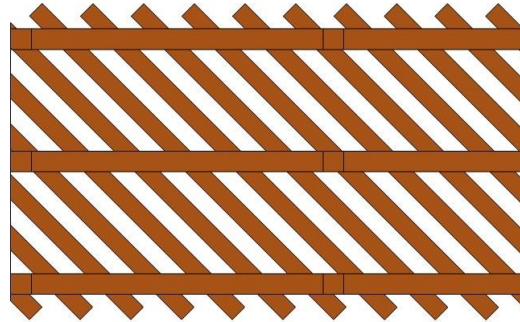
Release the three horizontal sections next.

NOTE: Guide markings for vertical posts.

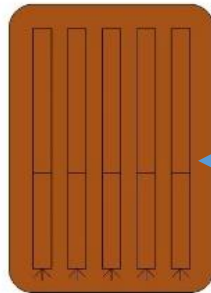


4

Fix the horizontal sections as shown noting the markings facing upward as noted in the previous step.



5



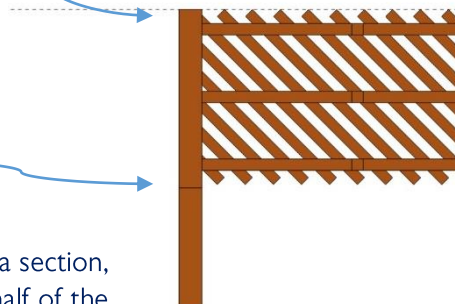
Release the large vertical posts.

NOTE: Markings denote ground level of post when fitting.

6

Align fence posts so that the top of the post is level with the tip of the diagonal pales.

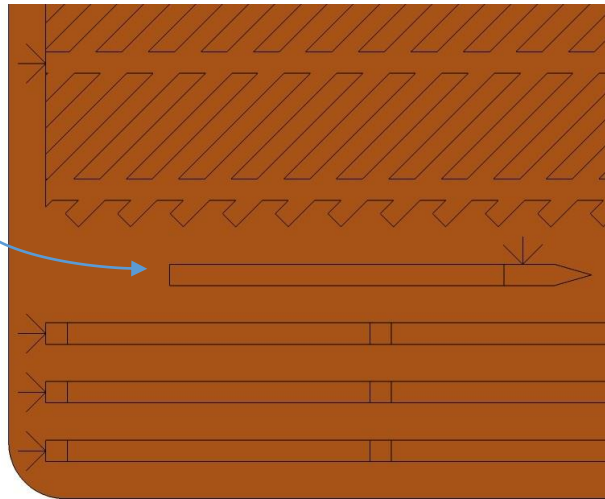
Note the ground level marking.



NOTE: End posts will sit fully on the end of a section, where a subsequent section is to be fitted half of the post will need to be exposed in order to join the next section. End markings are set out for this.

7

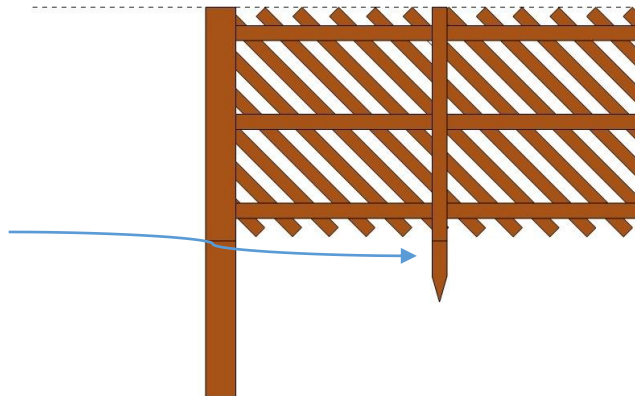
Release small vertical posts.



8

Align the smaller intermediate posts as with main posts following the guides on the horizontal rails.

NOTE: Ground level marking



9

Finished section

