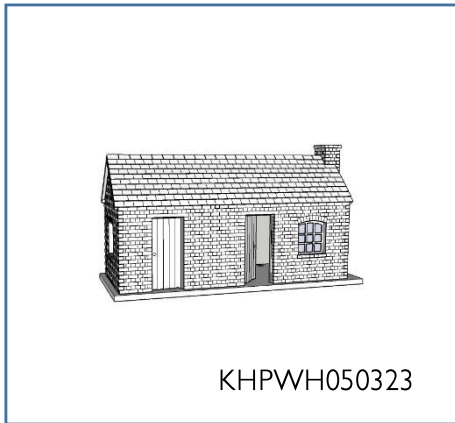


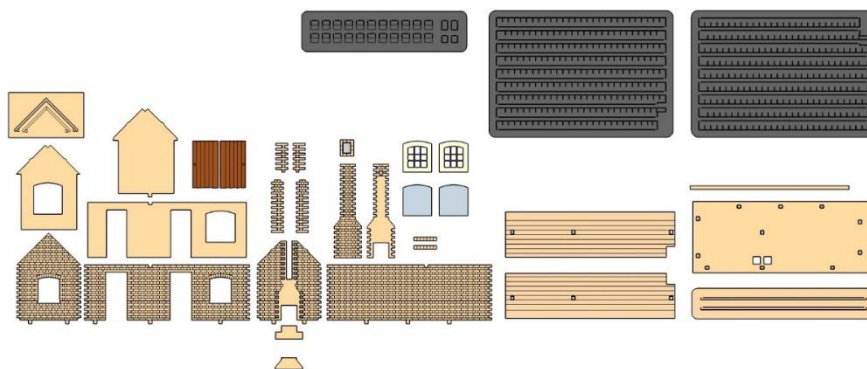
Design and production of fine quality laser cut models and components



Kings Heath  
Permanent Way Hut

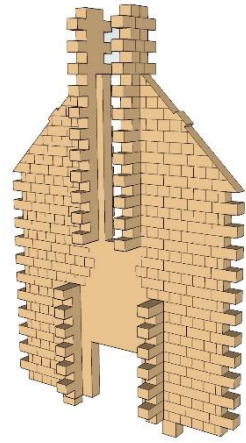
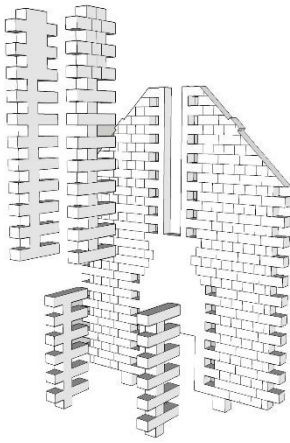
## Instructions

Lay out the parts supplied to familiarise yourself with them.

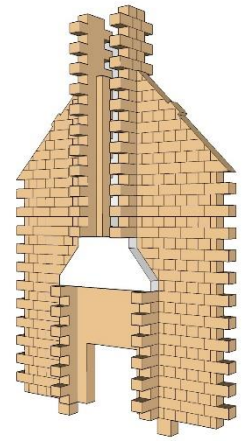
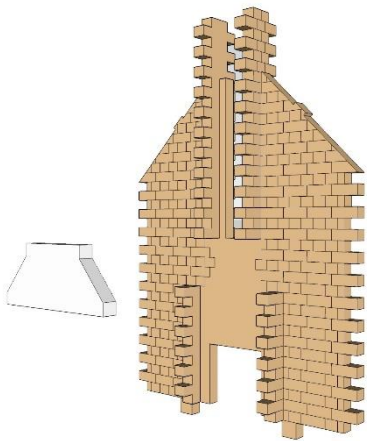


To assemble this kit you will require a good quality PVA adhesive and a craft knife or scalpel for cutting tabs on some parts. You may also find the aid of a pair of tweezers useful.

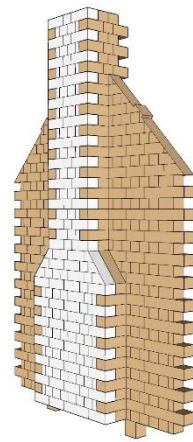
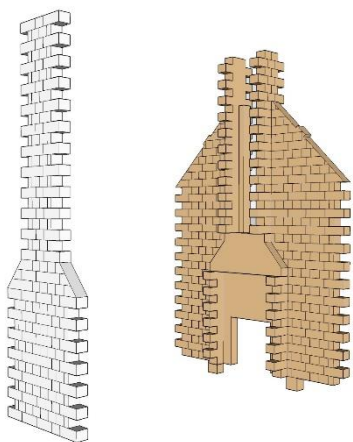
1



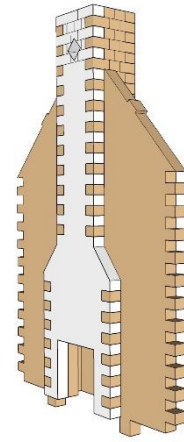
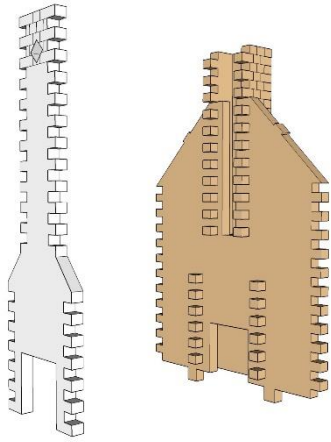
2



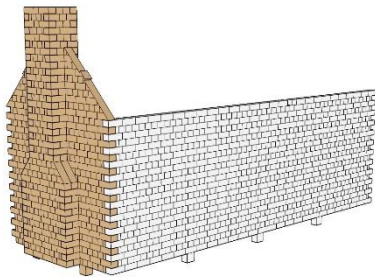
3



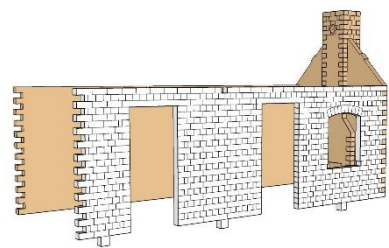
4



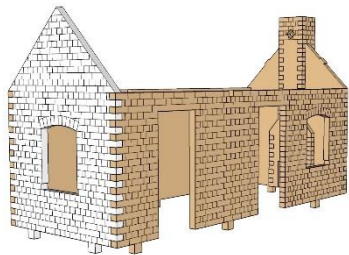
5



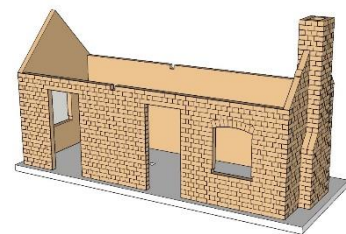
6



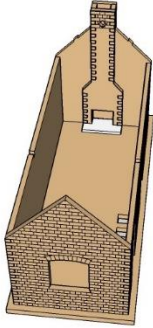
7



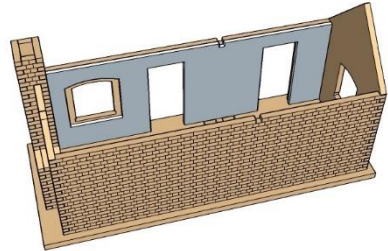
8



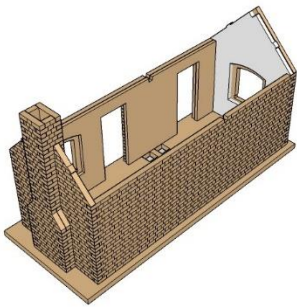
9



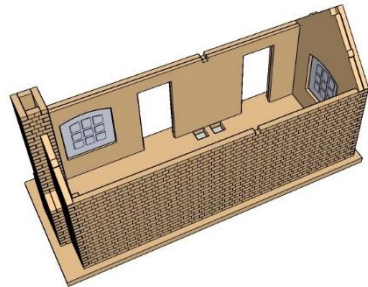
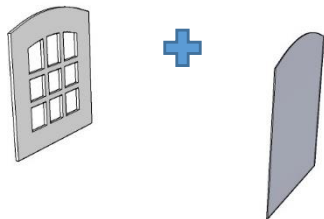
10



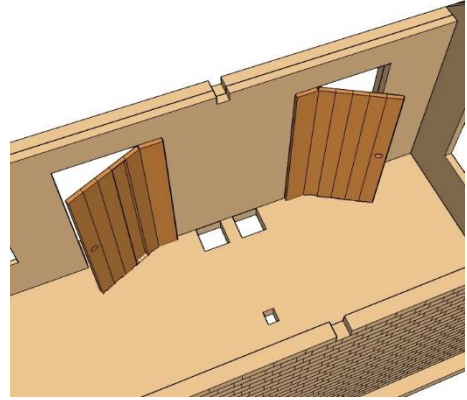
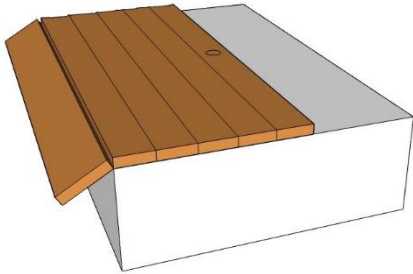
11



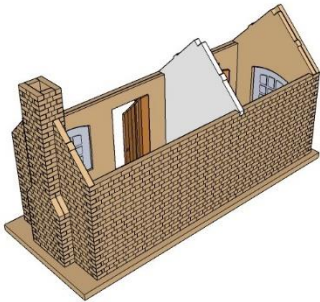
12



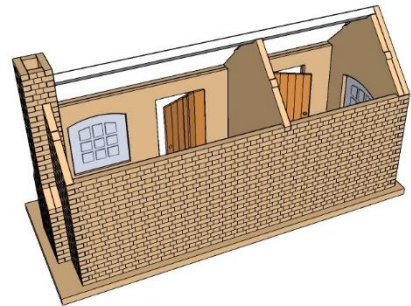
13



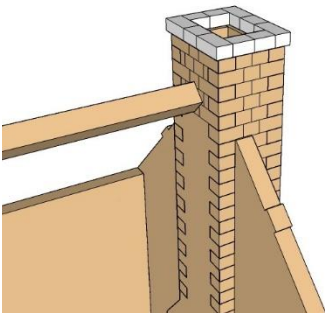
14



15

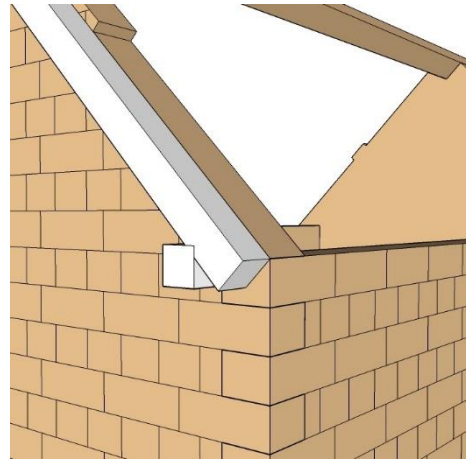
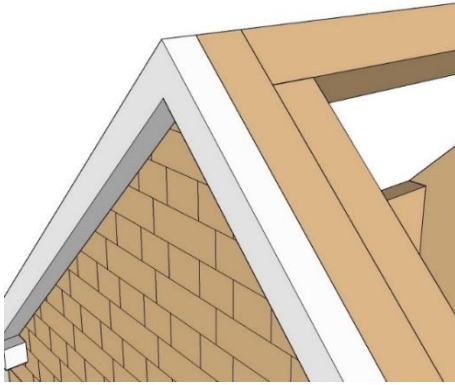


16

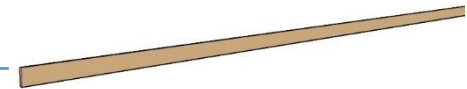
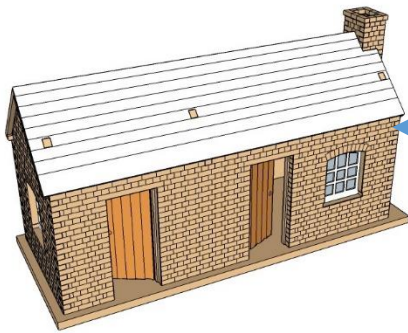




17



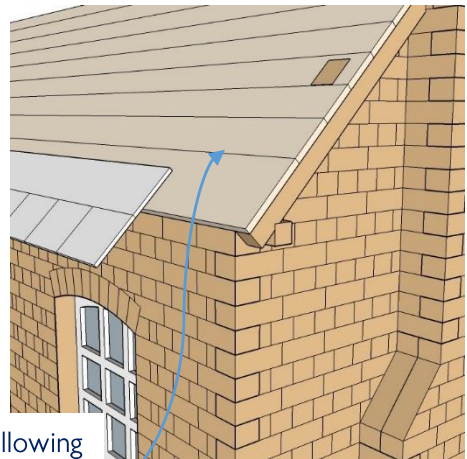
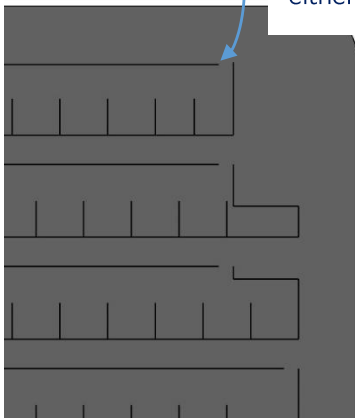
18



Affix roof coverings and fascia boards.

19

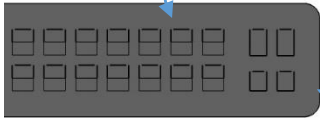
Release roof tiles by slicing through 1.0 mm tabs at either end of the rows



Affix roof tiles following markings on the roof

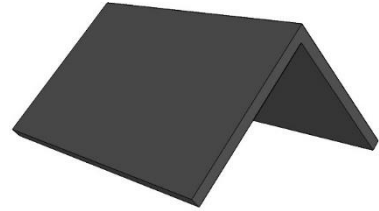
20

Ridge tiles

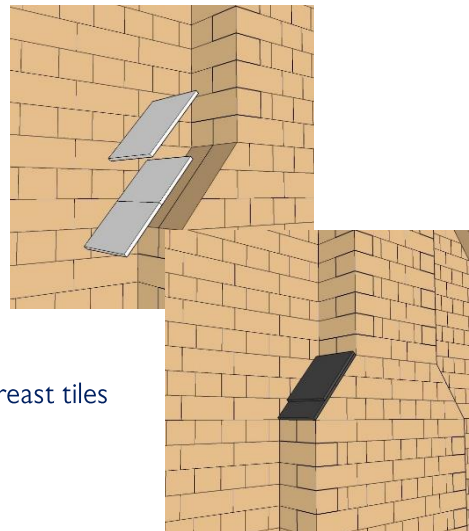
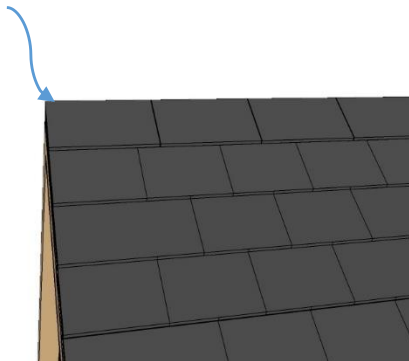


Chimney breast tiles

Release the ridge tiles as for the roof tiles and bend in the opposite direction to the score to form the ridge tile

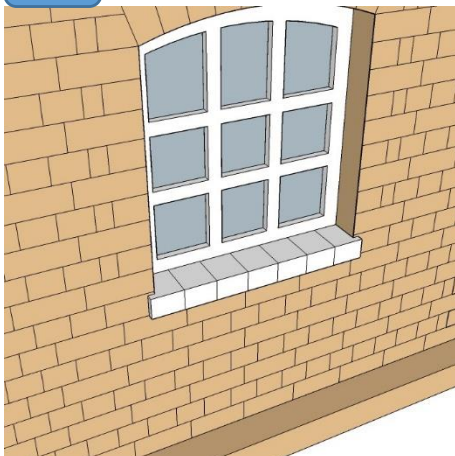


Affix ridge tiles to complete the roof



Affix chimney breast tiles

21



*Enjoy your model!*