

Design and production of fine quality laser cut models and components



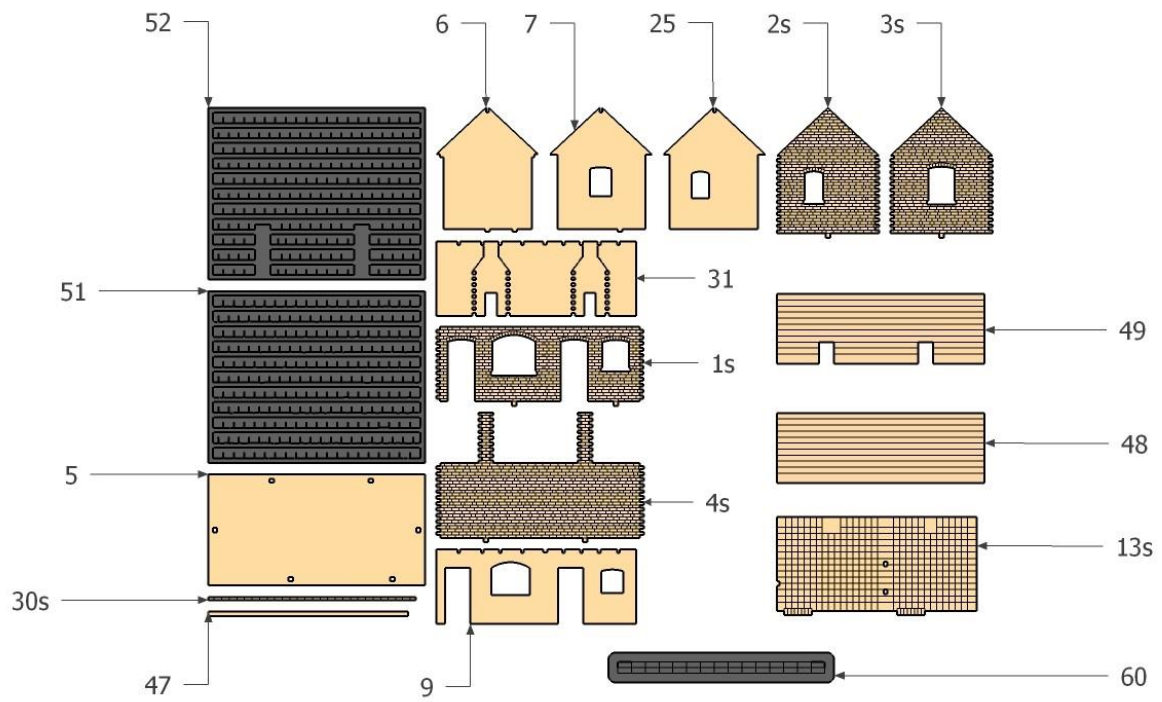
Rolfe Street Weigh  
Bridge Office

## Instructions

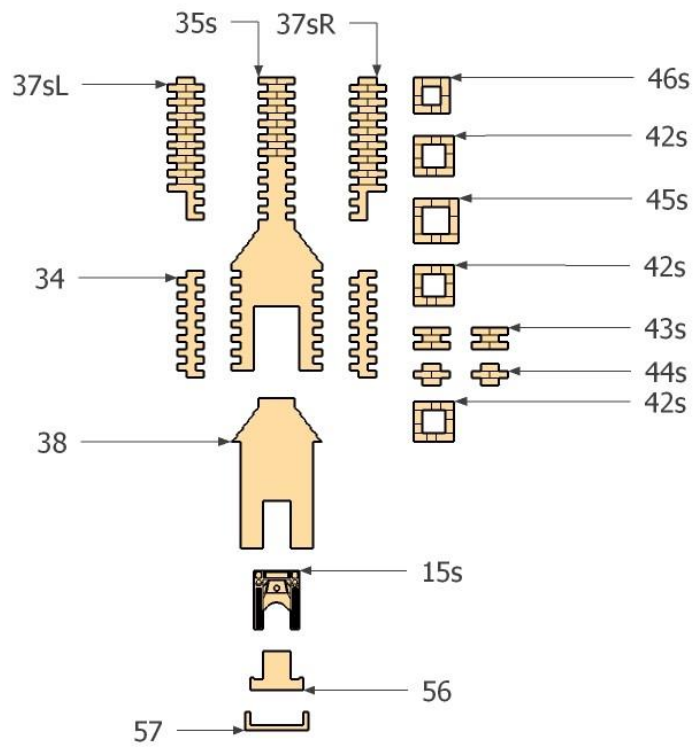
To assemble this kit you will require a good quality PVA adhesive and a craft knife or scalpel for cutting tabs on some parts. You may also find the aid of a pair of tweezers useful.

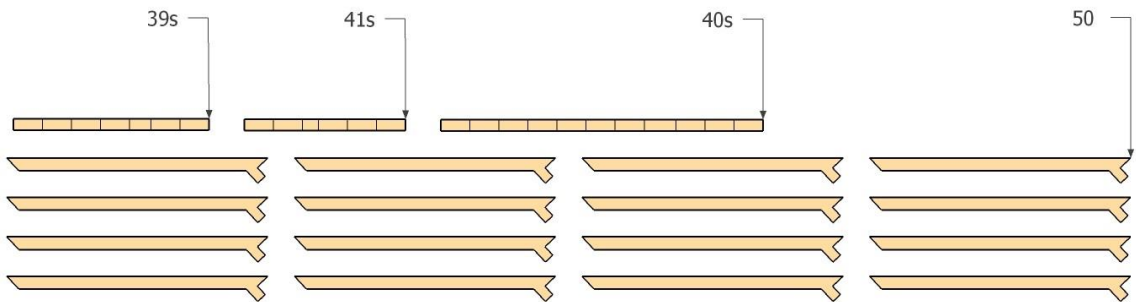
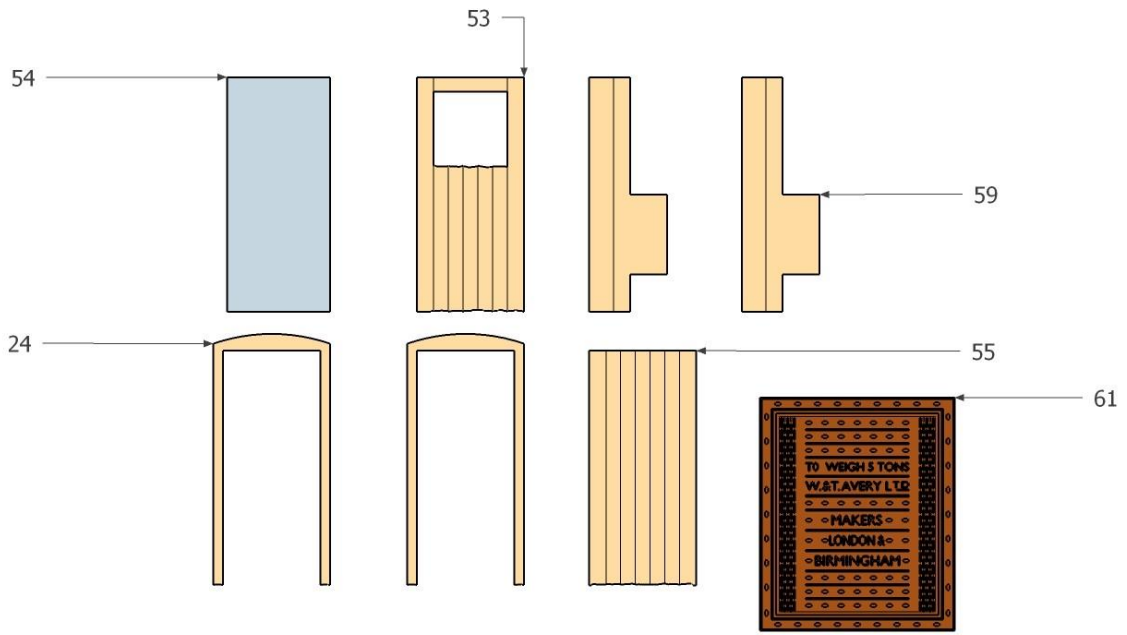
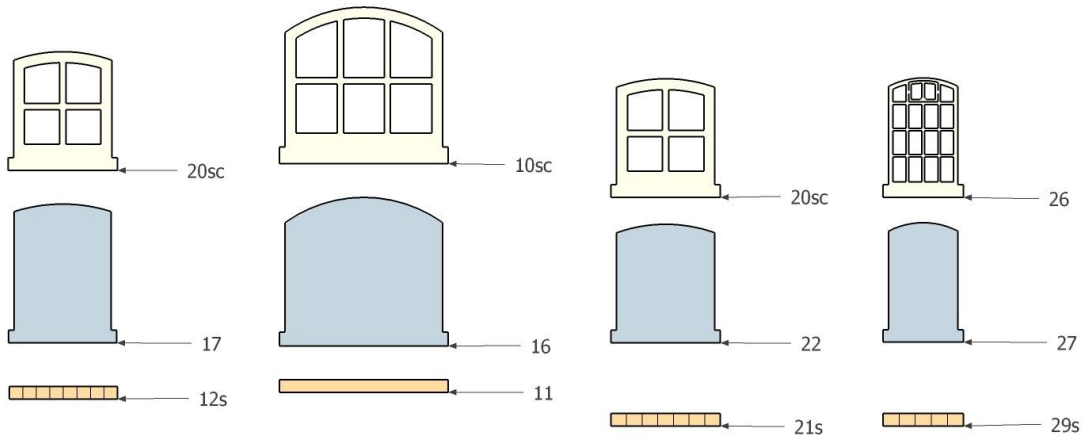
The following diagrams are grouped parts as individually packaged.

NOTE: Part numbers are supplied for reference and are not indicative of assembly order. Please follow assembly diagrams step by step.

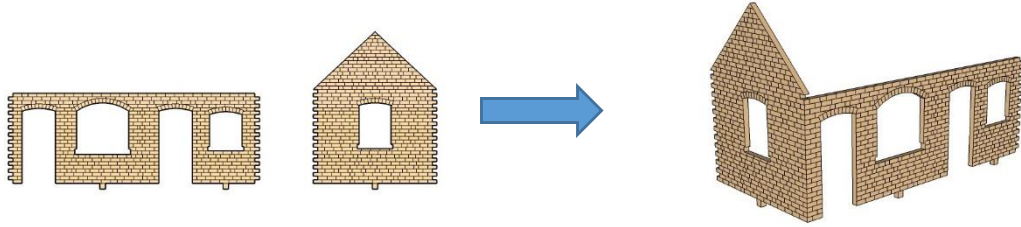


X 2

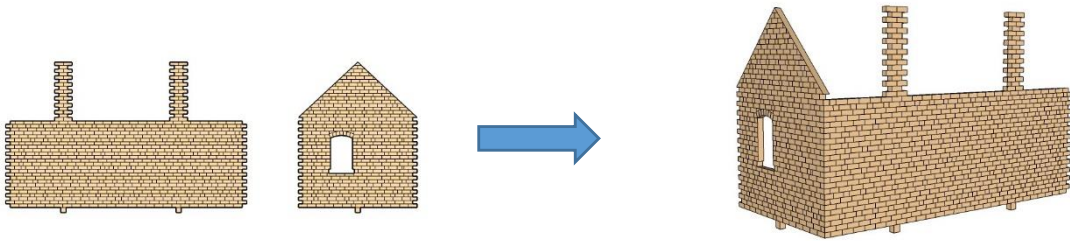




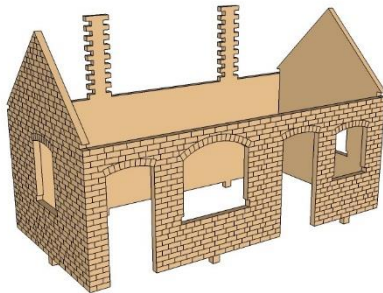
1



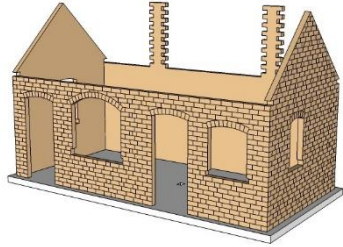
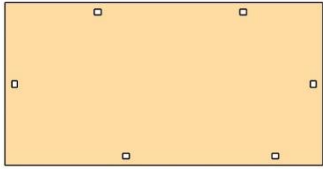
2



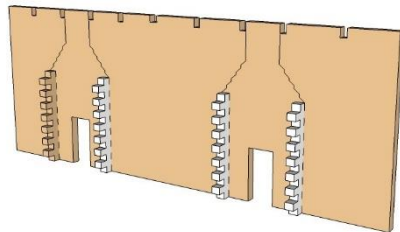
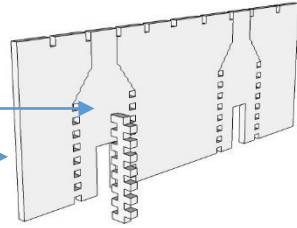
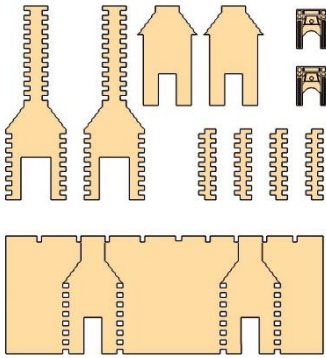
3



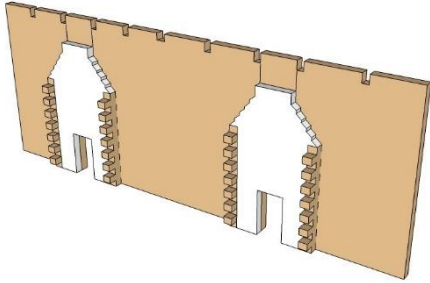
4



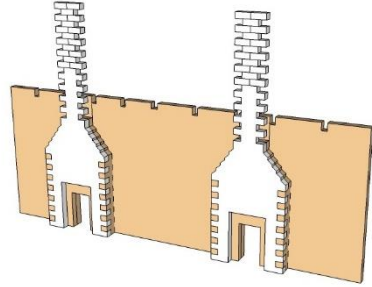
5



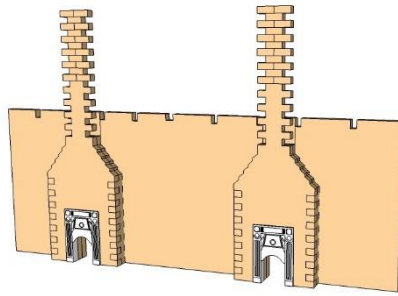
6



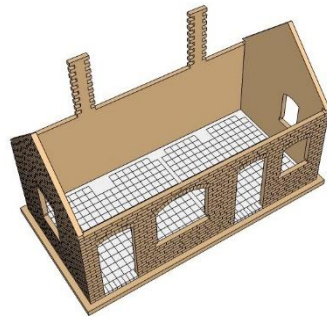
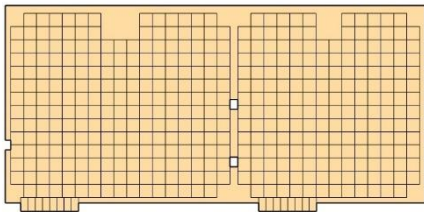
7



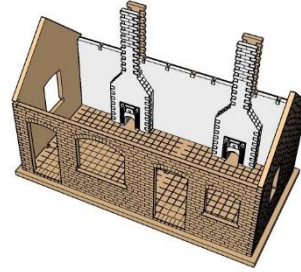
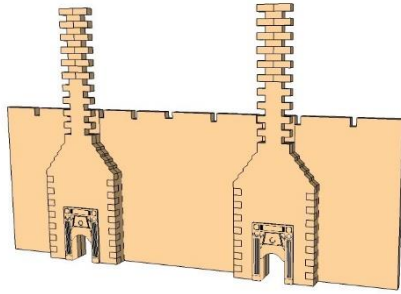
8



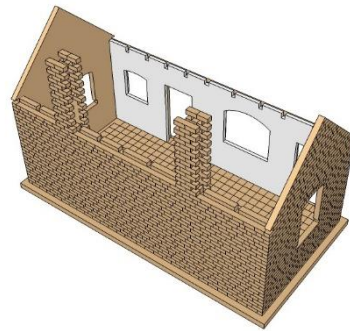
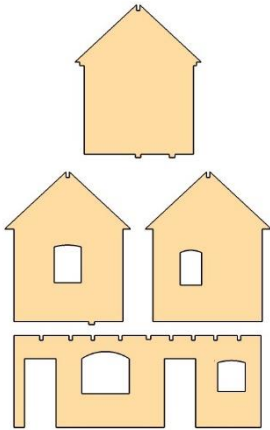
9



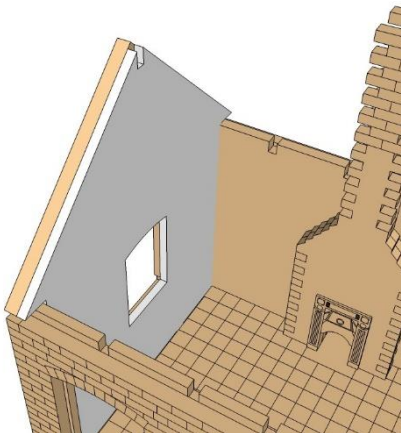
10



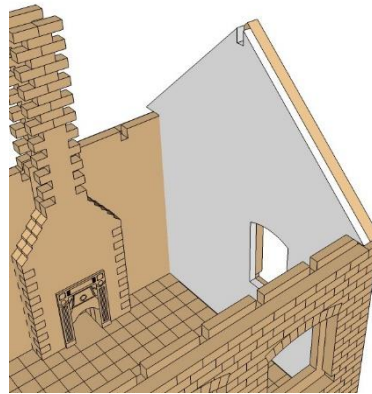
11



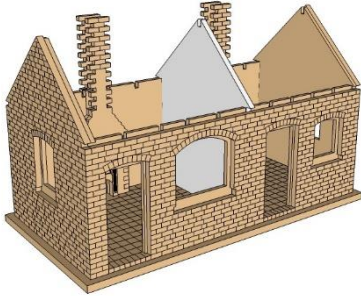
12



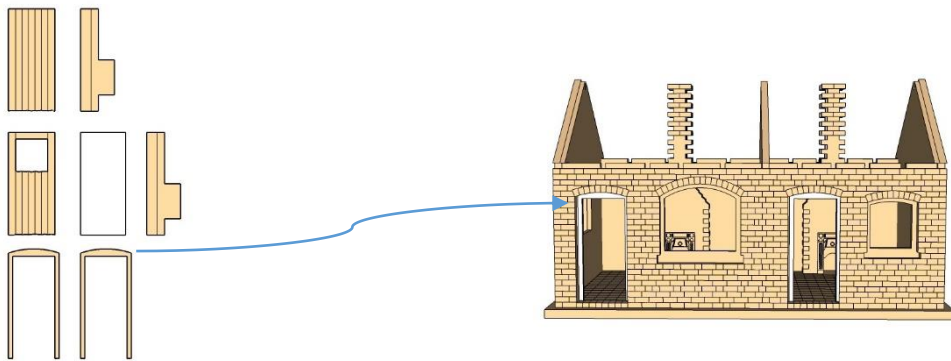
13



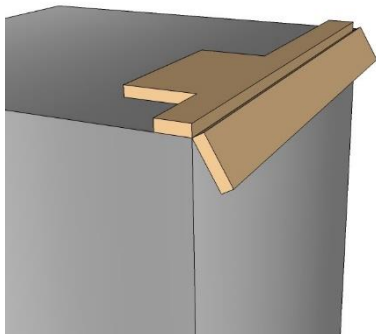
14



15



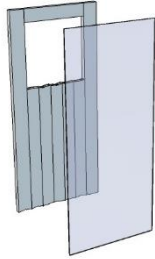
16



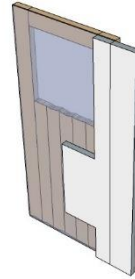
If the doors are to be represented in an open position carefully bend door hinges over a right angle prior to fixing them to the doors.



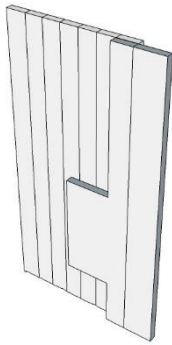
17



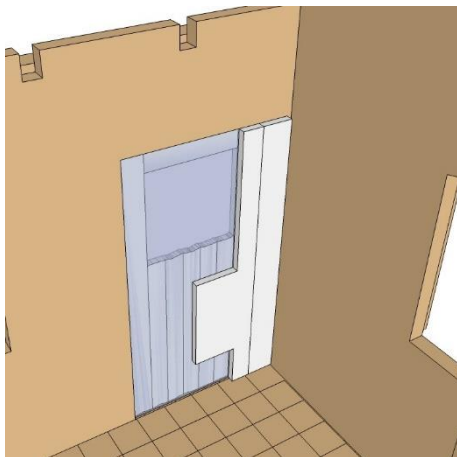
18



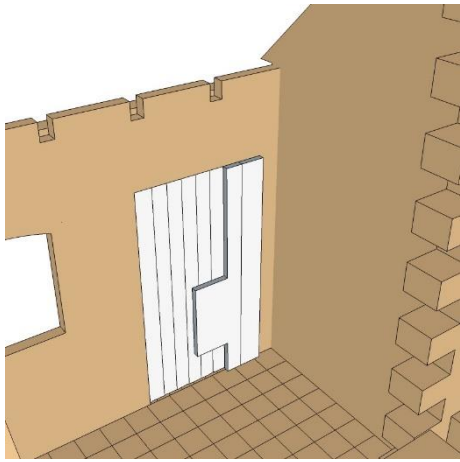
19



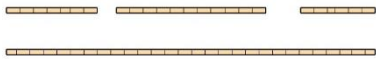
20



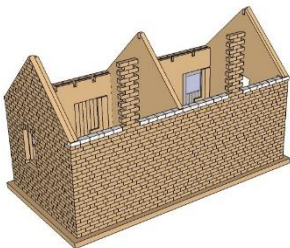
21



22



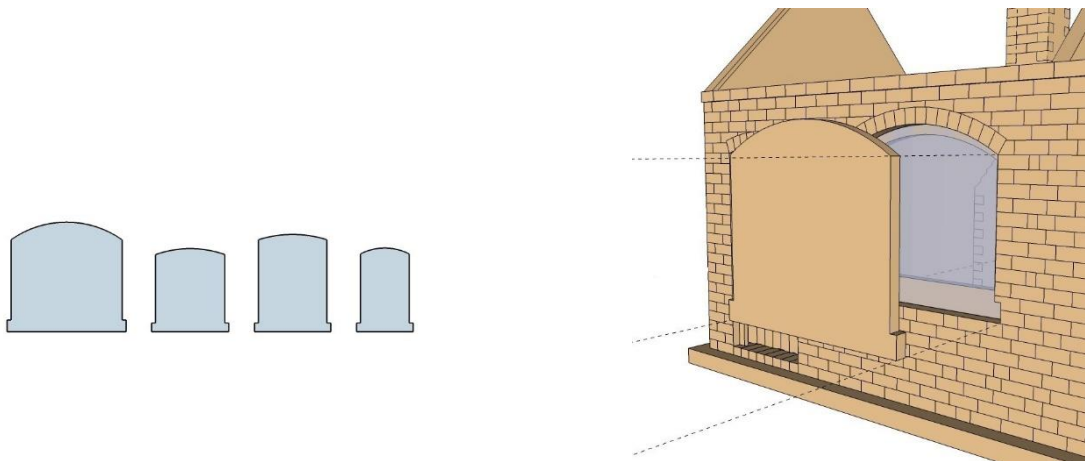
23



24



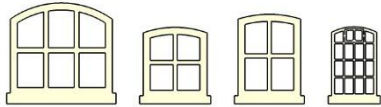
25



Identify glazing for each opening, use the blank window cut outs provided to press the glazing home evenly.

**CAUTION:** Remove the blank immediately to avoid gluing it in place. If using Superglue to fix the glazing **DO NOT** use the blank in this way as it will likely fix immediately.

26

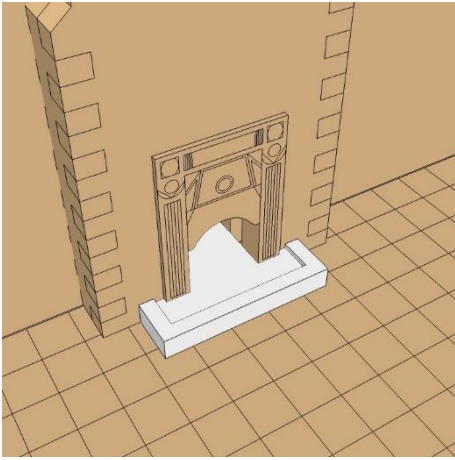


Once all of the glazing is in place, identify window frames for openings.

27

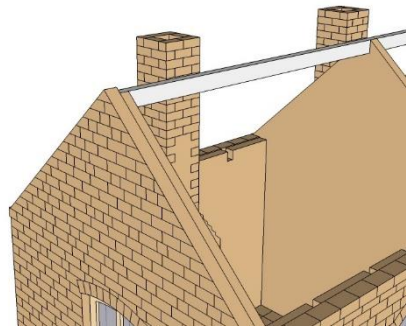
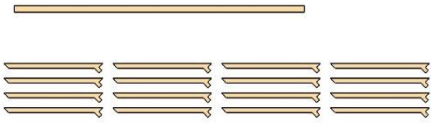


28



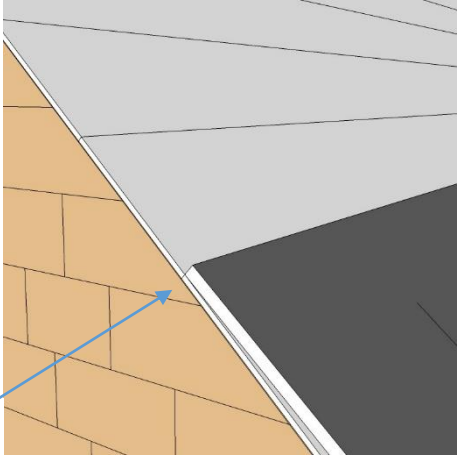
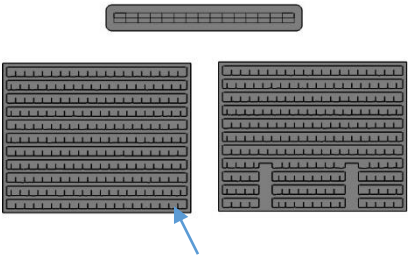
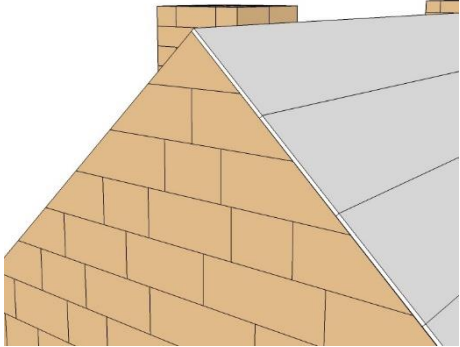
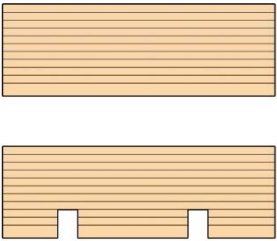
Fit the hearth to both fireplaces.

29



30





NOTE: Take the first row of tiles from the bottom of the sheet and start at the bottom of the roof.

33

Place all the roof tiles to both sides of the roof.

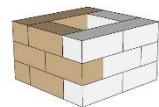
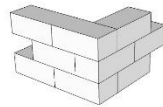
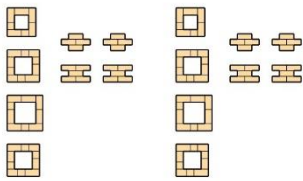


34

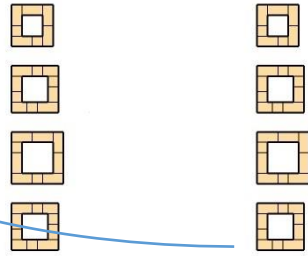
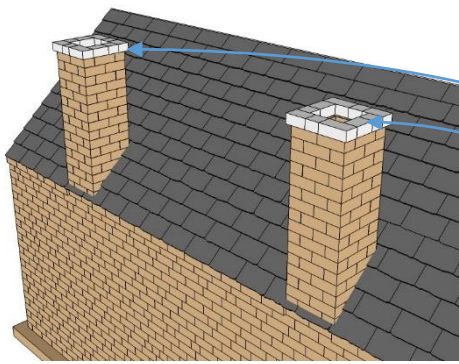
Fold the ridge tiles in half away from the score line and fit to the roof.



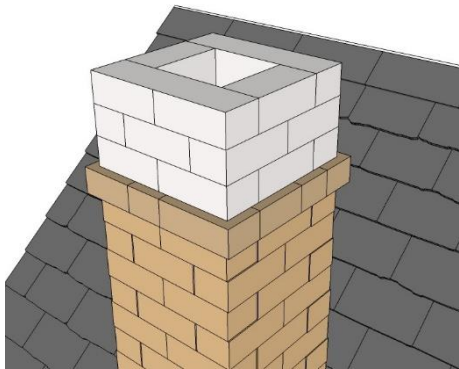
35



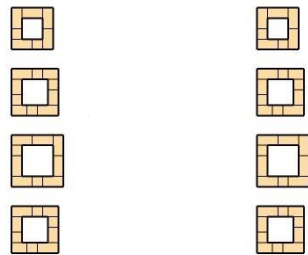
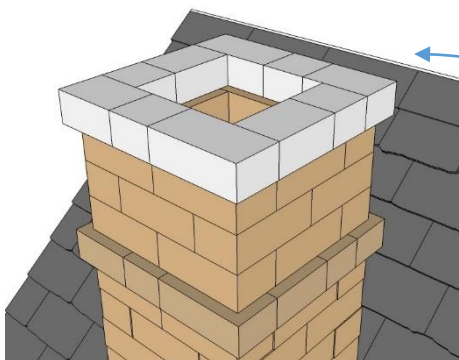
36



37

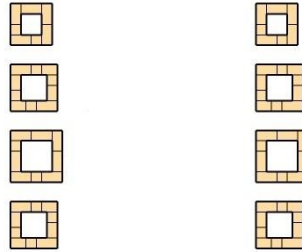
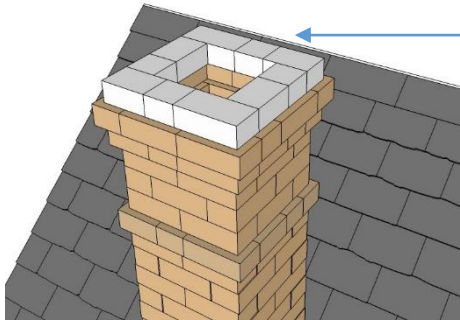


38

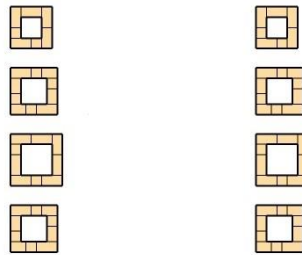
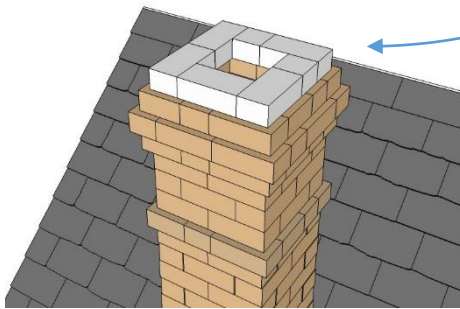




39



40



*Enjoy your model!*