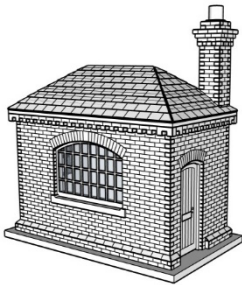


Design and production of fine quality
laser cut models and components



RW080825

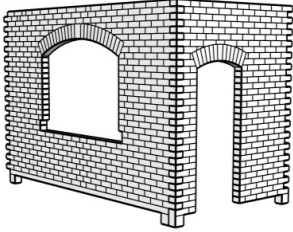
Ripple Weighbridge Office

Instructions

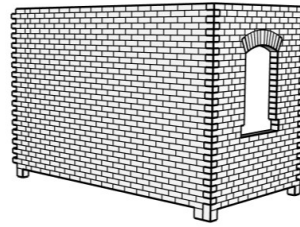
To assemble this kit, you will require a good quality PVA adhesive and a craft knife or scalpel for cutting tabs on some parts. You may also find the aid of a pair of tweezers useful.

You will find applying adhesive with a small detailing paintbrush beneficial, particularly brick joins and roof tile application.

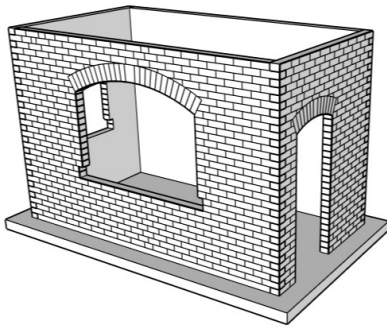
1



Begin by bringing together detailed brick wall parts applying adhesive at the brick joints. Be sure all the joints are square and the brick joints tight.



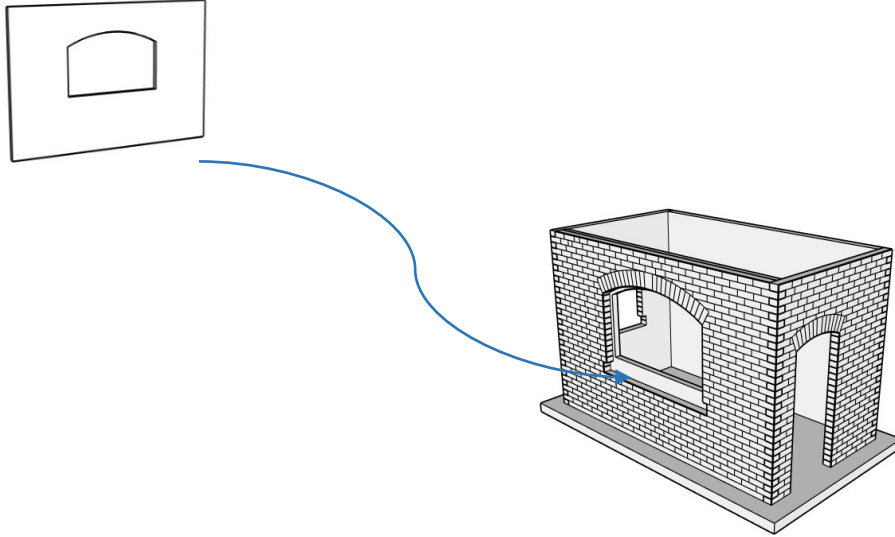
2



Before the adhesive has dried completely, bring together brick sections and fix them in the base as shown.

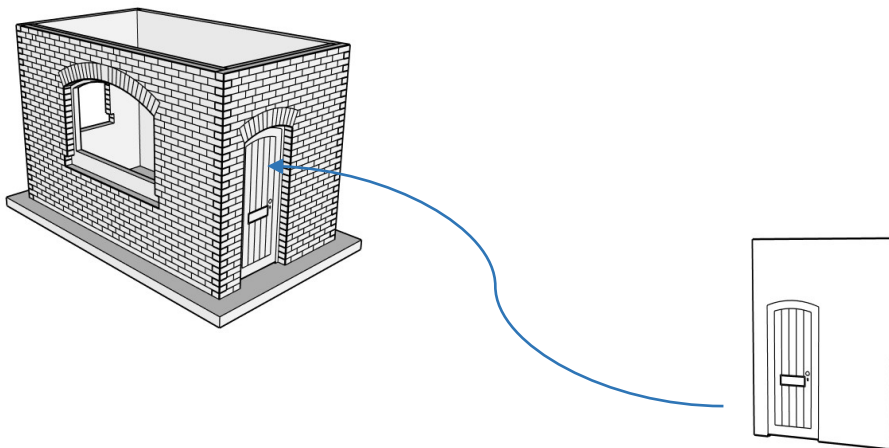
3

Locate and insert the front inner wall to create a window recess.

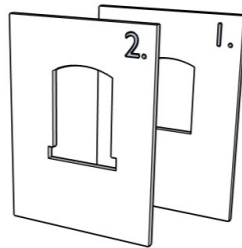


4

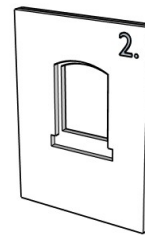
Locate and insert the door end inner wall.



5

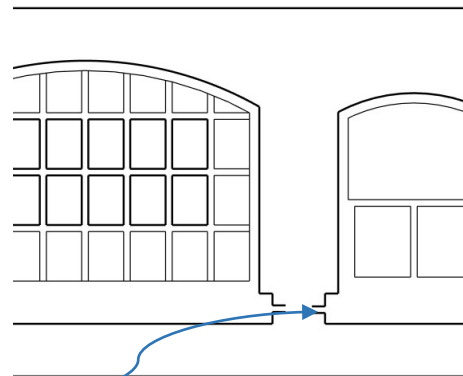
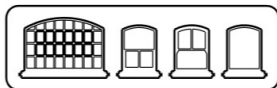


Prepare the small window wall by fixing part marked number two on top of part marked number one with numbers in the positions shown.



NOTE: The window frame and glazing must be fixed prior to fitting this wall to the main assembly (see next step).

6

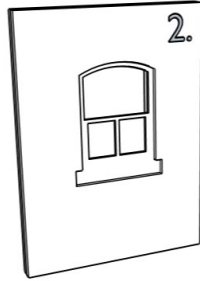


Locate the window parts sheet. Using a fine blade release components by slicing through the small retaining tabs.

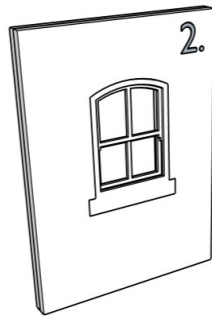
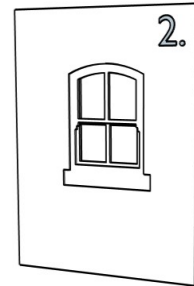
Start by removing the sash window frames, fitting order left to right.



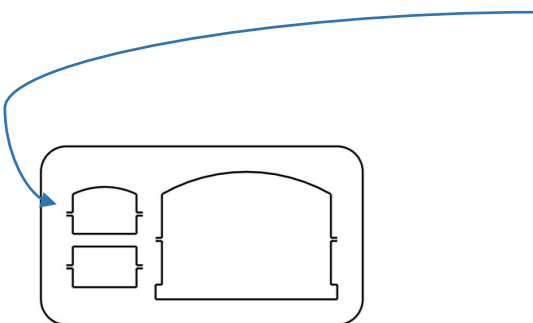
7



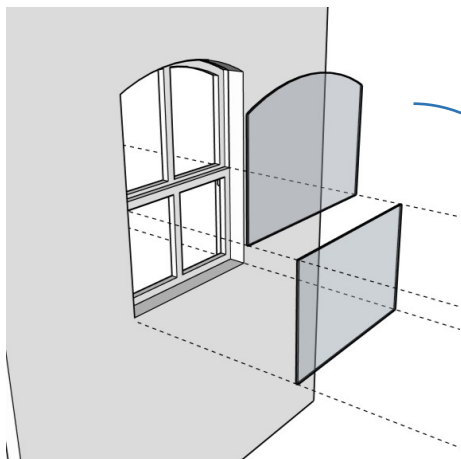
Build the sash window frame up by fixing individual layers in the order shown in the window recess. Apply a small amount of adhesive around recess and frame respectively as you apply the layers.



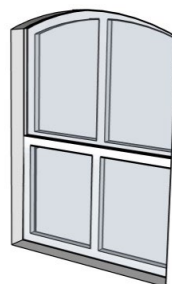
8



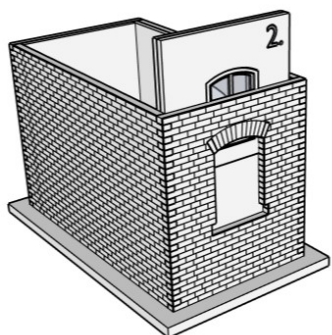
To complete the assembly finish by fitting the two small pieces of glazing provided. These will need to be removed from the parts sheet in the same manner as the window frames.



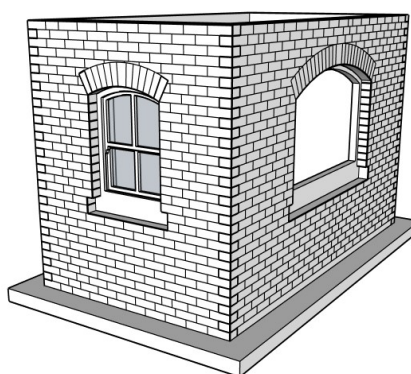
Apply a small amount of adhesive to the inner window frame and locate the glazing on the inside as shown.



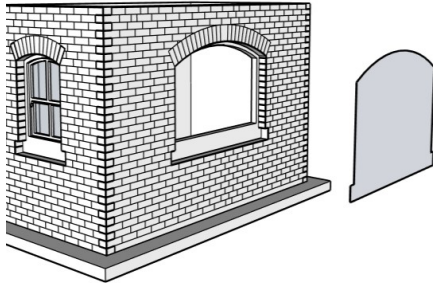
9



Locate and fix the complete wall and window assembly as shown.



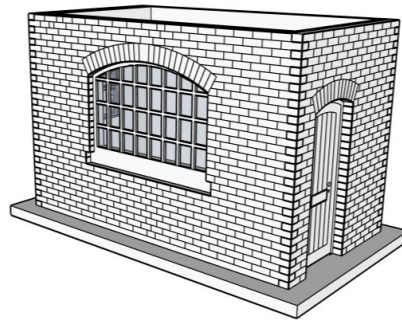
10



Remove the front window glazing from the sheet as previously and after applying a thin layer of adhesive fix the glazing in the recess.

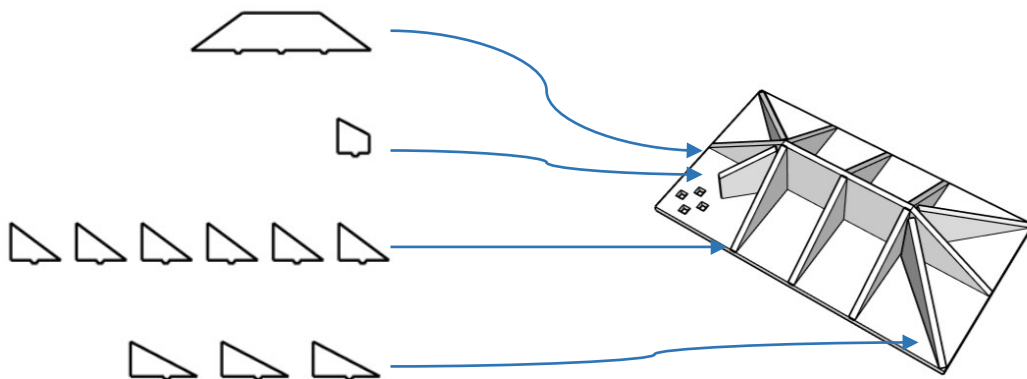
11

When the glazing has set remove and fit the front window in the same manner.



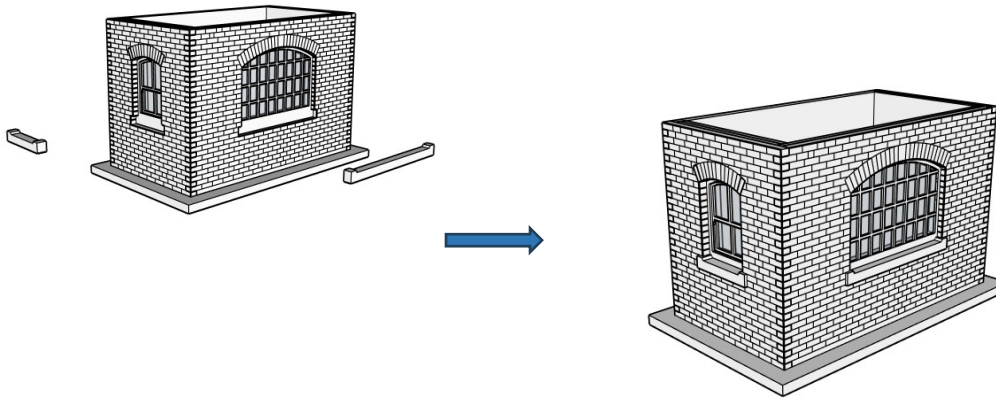
12

Locate roof parts and assemble as shown

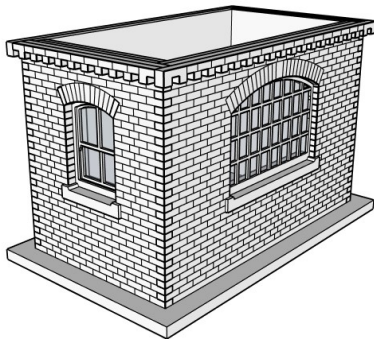


13

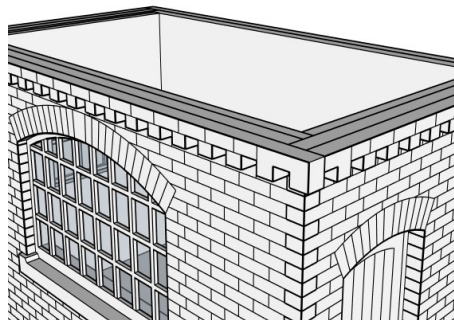
Locate and fix both window sills



14

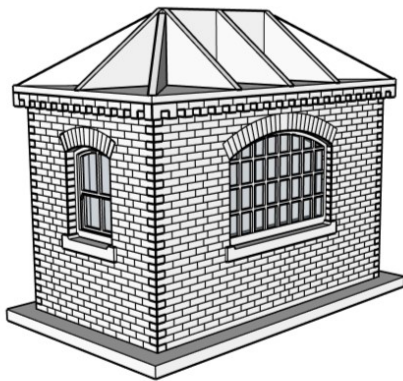


Locate and fix the eave detail by applying adhesive to top course of bricks.



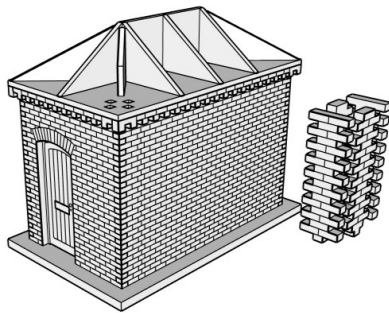
TIP: Carry out the next step before the eave detail has set. This will ensure the eave detail and roof mate precisely.

15

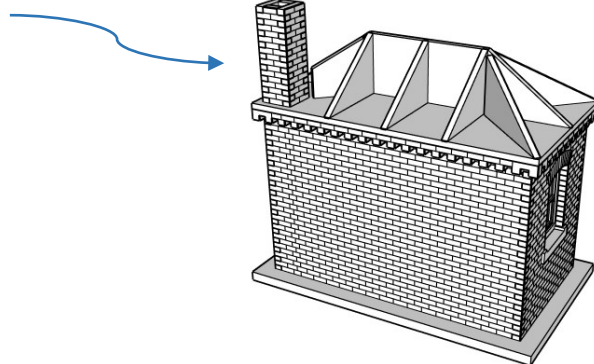


Apply adhesive to the top of the building wall and the eave detail. Make sure the flat of the roof assembly fits square over the eave detail and that the eave detail does not drop.

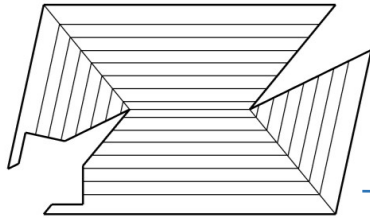
16



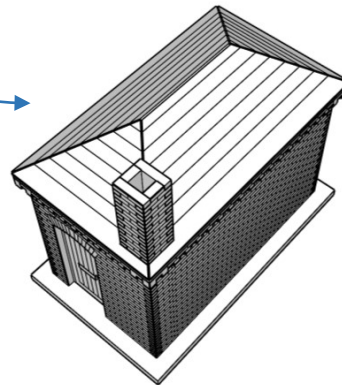
Assemble the chimney walls and fix to the roof as shown. Leave the chimney to set completely prior to moving on to the next step ensuring it sits square.



The roof tile underlay is precut and scored so that it will fold over the roof structure fitting and covering precisely.



Carry out a dry run and form the underlay ready for fixing.

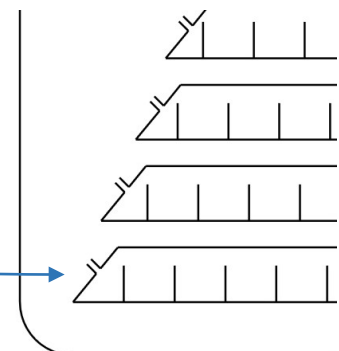


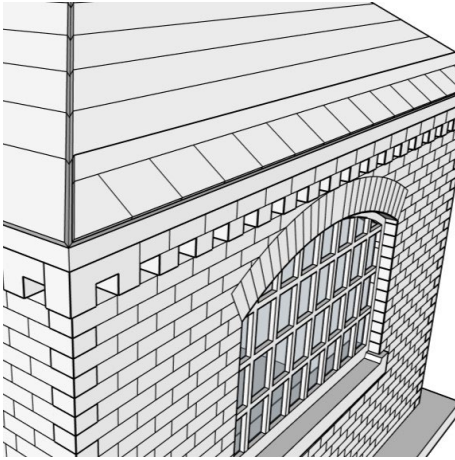
Apply adhesive liberally where the underlay makes contact with the roof structure. Pay particular attention over the eaves as you want the underlay to fit flush with the structure beneath. Work the underlay over the roof with your fingers as the underlay takes up the adhesive. You may need to keep pressure on for a short time.

Locate the four sheets of roof tiles, each sheet is specific to a section of roof, this should be apparent when you observe two sheets with provision for navigating the chimney.

Tiles are released by slicing through a small tab either end of the row.

Always start at the bottom of each sheet and roof respectively.

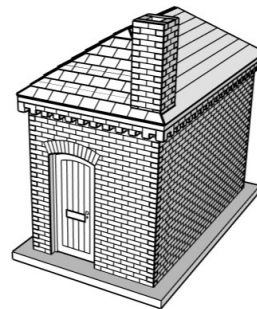
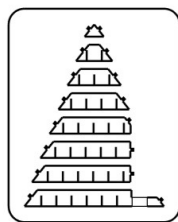


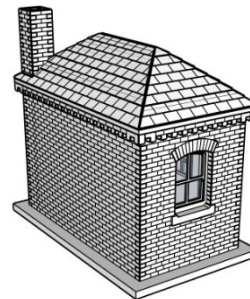
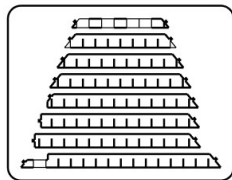
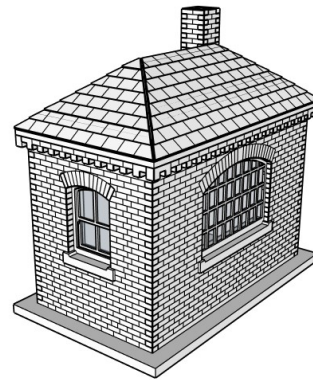
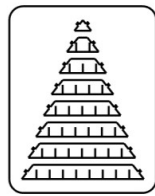


When fixing the roof tiles, use a small brush and apply PVA to the area you are going to fix the row of tiles. Observe that marks have been made on the tile underlay as a guide to where each row should go.

Work your way up the roof until you have placed all the tiles.

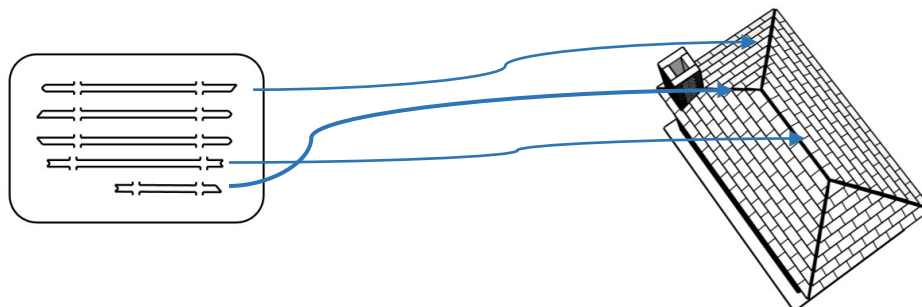
Continue with the same process for the remaining roof sides.



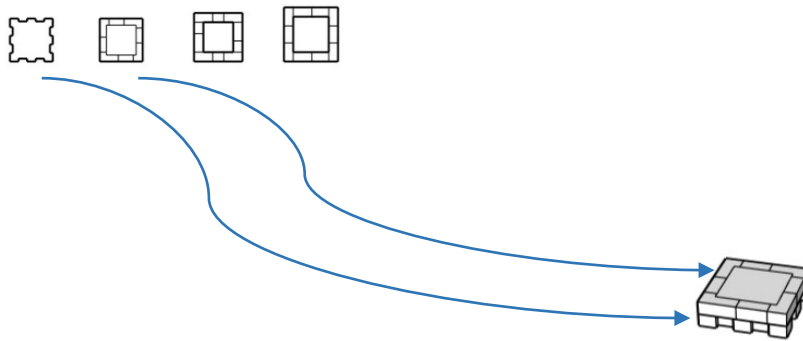


19

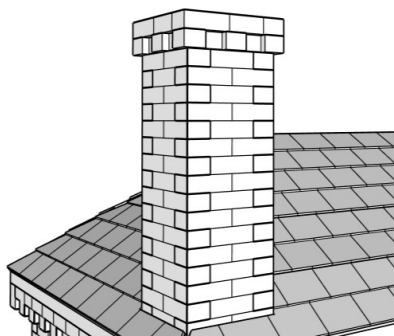
To finish the roof, locate the strips below. Release one part at a time. You will need tweezers for this, start by filling the relevant gap with a small amount of PVA, taking care not to spill over onto the tile surfaces. Place the strip in place.



Locate the chimney top brick parts shown noting their differences in size.

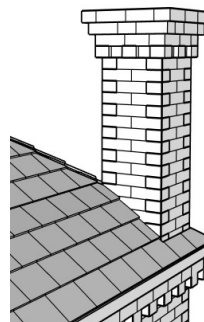


Combine the first two parts as shown.

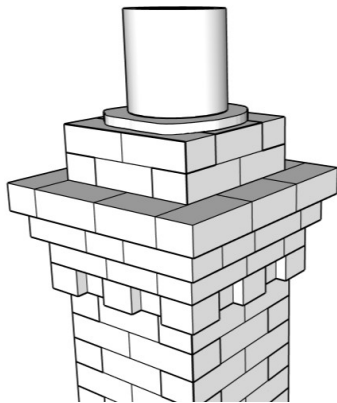
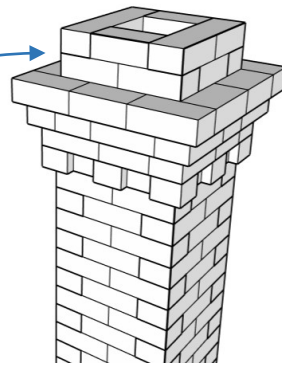


When dry fix the assembly to the chimney top so that the overhang is equal.

Fix the next two parts as shown noting the increasing size.



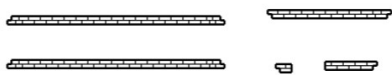
Locate the last chimney brick parts, combine them and fix as shown.



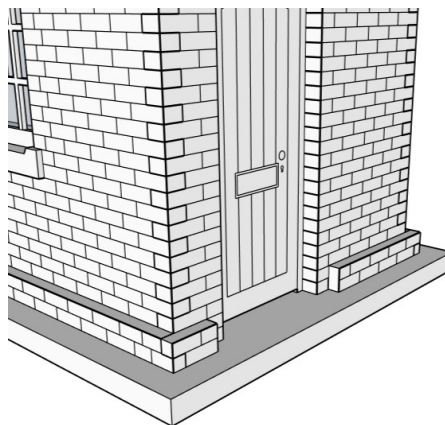
To complete the chimney, apply an appropriate amount of PVA on top of the previous assembly and site the pot. Any excess dried PVA will represent mortar.

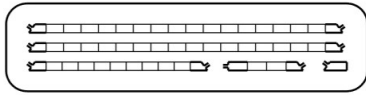
21

Locate the five sections of plinth brick.



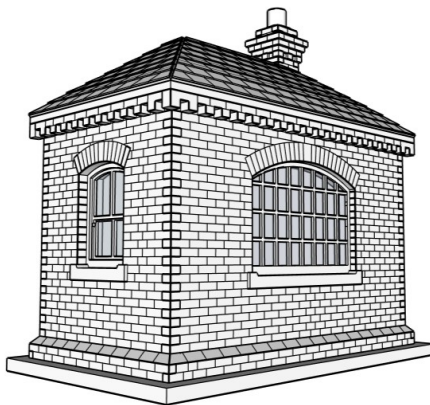
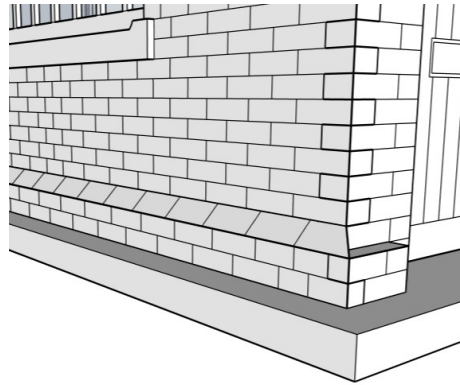
Apply adhesive to the base of the exterior walls, fix all of the plinth brick before the adhesive sets as to insure it all fits closely and square.





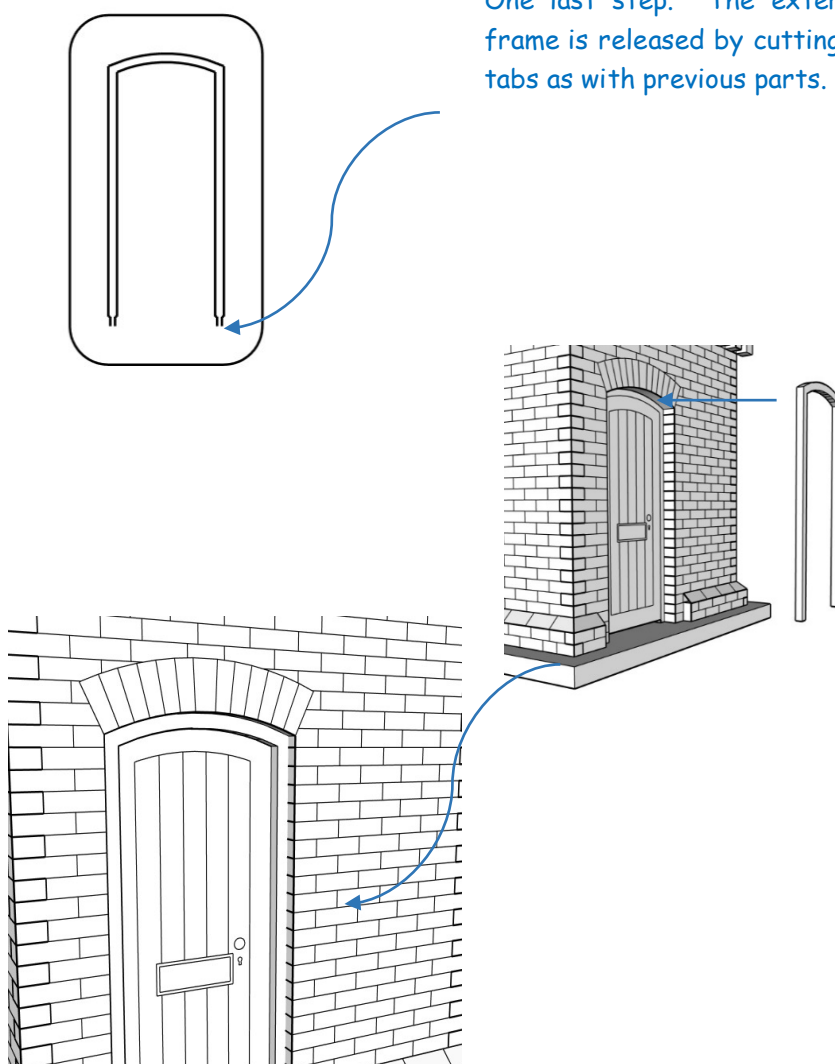
Locate the parts sheet opposite, these represent the angled brick specials. Remove one at a time and match them to the plinth brick previously fitted.

Apply PVA on top of the plinth brick up to the first brick on the adjoining wall. With tweezers apply the strip aiming for the top to rest against the first brick as shown.



Do this in turn for all the plinth brick.

One last step. The exterior door frame is released by cutting through tabs as with previous parts.



Enjoy your model!